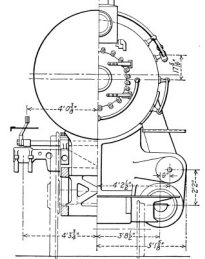




FROM THE HEAD END - Steve Staffieri , President



As the frost appears on the pumpkins and we enter a season on overeating, we have many other things to look forward to besides a larger waist. Many of the model railroad clubs are having their open houses. Please support them. Also check out the web site "modelrailroadopenhouse.com" There are over 200 private model railroads that open up to the public during the month of November. Many are Phila Chapter members. There are some beautiful railroads out there!



We had our nominations last month, and it was unanimous that the current board remain for another year. I never heard the floor so quiet during the nominations, you could have heard a pin drop! Anyway, the board is thankful that you support us and we will continue to do our best for you. I am fortunate to have such a great team to work with!

We will be mailing out the renewal forms to you very soon. Your NEW MEMBERSHIP CARD to the Phila Chapter will also be sent with this renewal, so look for it.

We should have a full house of vendors this coming meeting, being the Holidays and all. MAKE SURE you visit our chapter store for items that are on sale during this meeting.

For all those who cannot attend the next meeting, I hope that you have a safe, prosperous, and healthy Holiday and New Year. See you on December 7th!!

Steve Staffieri
(interceptor92@verizon.net)

CHAPTER MEETING HIGHLIGHTS - OCTOBER 26, 2013

The meeting was called to order at 1:03pm by President Steve Staffieri. Highlights taken from meeting minutes as recorded by Frederick Monsimer, Recording Secretary.

Modeling Committee— Member Bill Grosse is the new chairman, taking over for Ron Hoess who had served in the position for the past seven years.

Treasurer— Treasurer Tom Lavin presented the treasurers report and advised that the Chapter renewal notice, membership card, and newsletter would be forthcoming in a future mailing.

Membership— Tom Lavin reported Chapter membership at 563 members. Special welcome to our new chapter members: John Lung East Brunswick, NJ; Bill Lupoli Neshanic Station, NJ; Anthony Todaro York, Pa; Gregory Gagarin Chevy Chase, MD; Norman Huetger Trenton, NJ and Gary Mensch Williamstown, NJ.

Publications— Al Giannantonio reported that the new issue of the *High Line* has been mailed. The Chapter is also working on organizing a publications committee, so that publications can come out on a more timely basis.

National Update— Dave Scott reported that the next issue of the *Keystone* would be coming out around Thanksgiving. Andy Hart reported that the membership was at about 2,800 and membership renewals will probably go out about the first of December.

**CHAPTER MEETING
DECEMBER 7, 2013**

Drexel Hill Methodist Church
600 Burmont Road
Drexel Hill, PA

- 10:30 AM: *Doors Open*
- 11:00 AM: *Modelers Meeting*
To be Determined
- 11:30 AM: *Dining Car*
- 1:00 PM: *Business Meeting*
- 2:00 PM: *Presentation*
'Pier 122: Rise, Fall & Re-Birth'
Presenter: Greg Vlassopoulos

DECEMBER MEETING PRESENTER



“Pier 122: Rise, Fall & Re-Birth”

Presenter Greg Vlassopoulos covers the Pennsy 122 South Ore Pier. Discussion includes loading and unloading operations of imported ore, from South American vessels, into PRR trains destined for Bethlehem Steel in Bethlehem PA and U.S. Steel in Saxonburg, PA.



PHILADELPHIA CHAPTER STORE



PRRT&HS Custom Polo and T-Shirts

You can obtain an order form online or by contacting Steve Staffieri by email (interceptor92@verizon.net).

CHAPTER MEETINGS

February 8, 2014

April 12, 2014



E - NEWSLETTER

Philadelphia Chapter News

Subscribe at:
<http://eepurl.com/ofMs5>



Membership Renewal Challenge

Help us grow!



Invite a guest to a future meeting!

The Philadelphia Chapter (PRRT&HS) periodically publishes this newsletter. Contributions are encouraged and may be submitted for consideration, no later than (4) weeks prior to next scheduled meeting, by email to: phillyprnews@yahoo.com Editor: Russell Polo

Merton Station, PA 19066-9998
P. O. Box 356
PENNSYLVANIA RAILROAD
TECHNICAL & HISTORICAL SOCIETY
THE PHILADELPHIA CHAPTER

