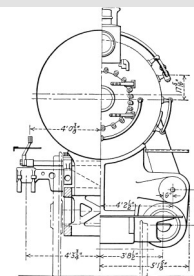




FROM THE HEAD END - Steve Staffieri , President

With all the Holidays winding slowly to a close and the snow is laying all over the place, it time to start thinking about things like Florida!
NO just kidding! There is no PRR down there, right?!! Well maybe just a little, very little. Just ask our former President.



Anyway, our last meeting ended on a slightly sour note. Unfortunately, technical difficulties prevented the presentation from being shown and even the DVD we decided to show was screwing up. What a way to end 2013. Even Charlie Horan was n't there! WHAT'S UP WITH THAT! Search parties are still looking for him..... Hopefully we will have Greg back to do his presentation. At least everyone got to take a little Taconite home, it beats coal, Santa.

Now on another note. I (and we, the board) have been questioned about why we got a 2013 membership card at the of the year! Well do to a small misunderstanding, the membership card that was sent out was supposed to be a "permanent" card (like the National's) without being dated. So many of you have been asking why they haven't received one for 2014. The card you have now (the 2013) will be your permanent card. LATER in 2014 we will be sending out a NEW PERMANENT Phila. Chapter card to all our members. This card will be of better quality than the one you have now and will be the ONLY one sent out to you. So you can "flash" it out with pride!

Well enough apologizing. I for one am looking forward to this New Year and the Annual Meeting. This one is being held by the National, let's see what they have in store for us!
See you in February!!

*Steve Staffieri
(interceptor92@verizon.net)*

CHAPTER MEMBERSHIP



Memberships are now due.

In a separate mailing, those of you who haven't sent in their renewals, will be receiving a membership renewal reminder. Please send in your renewals as soon as possible.

Your membership helps us to produce one of the finest magazines published - "The High Line" - and the remembrances of PRR employees in "Keystone Chronicles".

Our organization has been around for 40 plus years. Please help us to keep it around for another 40 years.

FEBRUARY MEETING



Presenter
Eugene Fagan covers operation of MP-54's out of Philly's suburban station.



E - NEWSLETTER

Philadelphia Chapter News

Subscribe at:
<http://eepurl.com/ofMs5>

CHAPTER MEETING FEBRUARY 8, 2014

Drexel Hill Methodist Church
600 Burmont Road
Drexel Hill, PA

- **10:30 AM: Doors Open**
- **11:00 AM: Modelers Meeting**
To be Determined
- **11:30 AM: Dining Car**
- **1:00 PM: Business Meeting**
- **2:00 PM: Presentation**
'Operating MP-54 Commuter
Cars Out of Philly's Suburban
Stations'

Presenter: Eugene Fagan

MEETINGS

Chapter: April 12, 2014

National: May 1-4, 2014

CHAPTER MEETING HIGHLIGHTS

The October 26, 2013 meeting was called to order at 1:00pm by President Steve Staffieri. Frederick Monsimer, Recording Secretary.

Modelers Meeting— Fred Monsimer gave a presentation on modeling utility poles. Chapter is seeking a chairman and committee members for the modeling committee. Presenters also needed for future modelers' meetings. If you want to take a video of your railroad, show it and talk about it, that could be a good program.

Membership— Tom Lavin reported Chapter membership at 563 members. Special welcome to our newest members: John Lung East Brunswick, NJ; Bill Lupoli Neshanic Station, NJ; Anthony Todaro York, Pa; Gregory Gagarin Chevy Chase, MD; Norman Huetger Trenton, NJ and Gary Mensch Williamstown, NJ.

Publications— Al Giannantonio received applause for the most recent "High Line". After the applause, Al said that he was preparing the next issue and that the Chapter will be setting up a committee to handle the publications. He also said that Bill was working on the next issue of "Keystone Chronicles".

National Update— Dave Scott reported that the "Keystone" had recently dropped to the mail.

The Philadelphia Chapter (PRRT&HS) periodically publishes this newsletter. Contributions are encouraged and may be submitted for consideration, no later than (4) weeks prior to next scheduled meeting, by email to: phillyprnews@yahoo.com Editor: Russell Polo

THE PHILADELPHIA CHAPTER
PENNSYLVANIA RAILROAD
TECHNICAL & HISTORICAL SOCIETY
P. O. Box 356
Merton Station, PA 19066-9998

