



**FROM THE HEAD END - Steve Staffieri, President**

With the National convention ending last Sunday, my head is still reeling from ideas and plans I got for next years convention. For those who did not attend the convention was a great time. I missed the "steel plant" tour, but I heard it was really good! The vendors were everywhere and I must admit I did come home with a few "goodies"!

We had brought some of the booklets to promote the Phila chapter I had spoke to you about at the last meeting. About 150 of them went fast, and I asked if any of our members took them that they pass the chapter application along to a non member, with the hopes of joining.

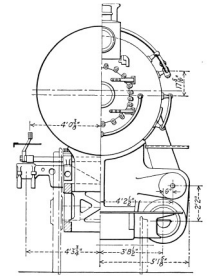
The membership meeting went really well although we were all sad to hear that Al Buchan had reached the end of his tenure as our National president. We will miss him at the helm of our organization. Bruce Smith is our new President of the National and does he have big shoes to fill!! Good Luck Bruce!

The banquet was also great, we even got to hear a Bar Mitzvah (blasting DJ) in the other half of the separated banquet room (poor planning on the part of the hotel). Oh well, the speaker did the best he could, it was still nice!

The big news for modelers was the offering from Broadway Limited of the PRR H-10 in HO scale. There were many other things to do and see. The convention was a definite success!

Well that's all for now, we are dumping the throttles, full speed ahead for the convention in 2013!!

- Steve (interceptor92@verizon.net)



**PHILADELPHIA CHAPTER - PENNSY DAYS**

**The Phila Chapter is having its own "Pennsy Days" in Strasburg this coming JUNE 9<sup>th</sup>.  
Our meeting will begin at 10:30 AM and continue till 11:00 am.**

**THEN Charlie Fox from the PRR Museum will be taking the group back to see the progress of PRR 460!**

**THEN, for those interested our Phila Chapter will be offering an "Amish" lunch at the "Dutch Way" restaurant in Gap PA (for most it will be on the way home). We are charging all members and families \$5.00 a person. This buffet lunch normally costs \$13.29 a person for all the food you can eat and all you can drink, with gratuity included. The chapter is covering the rest of the cost!!! Directions will be given out at the meeting and the \$5.00 per person will be collected at the entrance to the room we have reserved at the Dutch Way.**

**BUT that's not all!!**

**After that big lunch, (if we can move!) we will be going to Christiana PA (3 minutes from the restaurant) as the Lancaster NRHS will be opening up their restored former PRR Passenger, Freight house and Cabin for us to see. We might even see a passing Amtrak train! This will be at 3:30 after lunch.**

**WOW!! A great time for all!!!**

**A special thanks to my 2013 convention public relations man John Dunn for putting this all together!! See good things do come from Jersey! I hope to see you there!!**

**Steve Staffieri**

## NEXT CHAPTER MEETING JUNE 9, 2012

Railroad Museum of Pennsylvania  
PA Route 741 (Gap Road)  
Strasburg, Pennsylvania  
www.rrmuseumpa.org

- **10:30 AM: Business Meeting**
- **PRR E6s Atlantic #460  
“Lindbergh Engine” Tour**  
Railroad Museum of Pennsylvania  
Director Charlie Fox will provide back shop access to see progress of PRR #460 restoration.
- **“Amish” lunch at Dutch-Way**
- **Lancaster NRHS Access**



Chapter renewal rate is at 104% . This figure does not include our 6 new, first time members. Congrats to all for helping to grow the chapter!

## APRIL MEETING HIGHLIGHTS

On April 21, 2012 the Philadelphia Chapter held a scheduled meeting in Drexel Hill, PA. The meeting was called to order at 1:07pm by President Steve Staffieri. Recording Secretary Frederick Monsimer recorded the meeting minutes. Highlights follow:

**Sales** – Steve Staffieri reported that John Tancredi has retired as our sales committee chairperson. The chapter is grateful that John for spending the past ten years in this position. Mark Cole will be taking over the online store and manning the sales table during chapter meetings.

**Modelers Committee** – Ron Hoess reported that a weathering demonstration had been presented at the earlier Modelers Meeting. Volunteers are needed to give presentations at future modelers meetings. Lastly, volunteers are also needed to staff the model room and give presentations at next year’s national meeting in Strasburg, PA.

**Annual Meeting 2013** – President Steve Staffieri reminded us that our chapter would be hosting the 2013 meeting, and identified the chapter members who would be coordinating each aspect of the meeting. Ron Hoess (Modeling), Ken Rideout (Vendors), Al Giannantonio (Registration), Tom Lavin (Model Railroad Tours), Gus Minardi (Clinics), John Dunn (Liaison with Strasburg), Steve Staffieri (Everything else.) If you would like to help or have ideas, please contact the appropriate individuals.

The Philadelphia Chapter (PRRT&HS) periodically publishes this newsletter to provide the membership with Chapter and related news. Contributions are encouraged and may be submitted for consideration, space permitting, by email to: [phillyprnews@yahoo.com](mailto:phillyprnews@yahoo.com)

Wayne, PA 19087-0663  
P.O. Box 663  
TECHNICAL & HISTORICAL SOCIETY  
PENNSYLVANIA RAILROAD  
THE PHILADELPHIA CHAPTER

