



## FROM THE HEAD END - Steve Staffieri , President

Well, our September meeting had a great turn out, it was great seeing everyone again, since the last time we met (not counting the Annual Meeting) was way back in April.

Ron Hoess has resigned from being the chairperson for the modelers meetings. After 7 years we want to sincerely thank him for all his efforts and the great job he did.

Bill Grosse, one of our newer members has stepped up and offered to take over for Ron. I hope that all of our members will support him, as well as offer to do modeling clinics for him. Look for him at the next meeting.

Our new website is up and running, Russ has done a great job, watch it grow as time goes on.

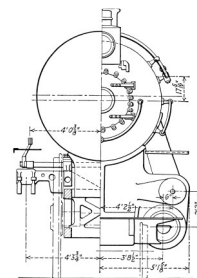
As the Holidays approach (did I just say that?) our "Chapter Store" will have "special" sale prices on our publications and the Annual Meeting boxcar. We will also have on hand a few signed and numbered copies of our Lerro Print "Shifting on Delaware Ave." These will be offered only at our meetings and only to Phila Chapter members at a very special price. See Mark for more information.

Well I look forward to seeing you on the 26<sup>th</sup>.

REMEMBER: this is our "Halloween" meeting, so you can come dressed, I am sure everyone will appreciate that.

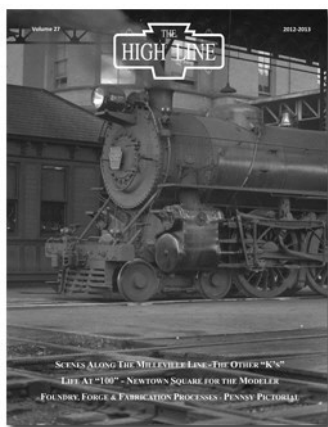
I will be coming as Charlie Horan!!

See you there!



*Steve Staffieri*  
([interceptor92@verizon.net](mailto:interceptor92@verizon.net))

## THE HIGH LINE - OCTOBER 2013 DELIVERY



The double-sized High Line Volume 27 for 2012/2013 is currently being printed and should be mailed before the end of October.

The issue contains a feature article on the Pacific class K2s and K3s locomotives. Frank Kozempel shares a photographic journey from Camden to Millville, on the Millville line of the PRSL. Richard Short gives us an idea of what it was like to live beside the Main Line west of Overbrook. Photographic details at the end of the Newtown Square branch line are presented for the modeler and the editor's 2010 Annual Meeting presentation of "Foundry, Forge & Fabrication Processes" is put into print. Some rare images are provided in the Pennsy Pictorial section and a letter received from a member's wife provides some food for thought for us all.

**CHAPTER MEETING  
OCTOBER 26, 2013**

**Drexel Hill Methodist Church  
600 Burmont Road  
Drexel Hill, PA**

- **10:30 AM: Doors Open**
- **11:00 AM: Modelers Meeting**  
To be Determined
- **11:30 AM: Dining Car**
- **1:00 PM: Business Meeting**
- **2:00 PM: Presentation**  
“When the Railroads Came To Concord”  
Presenter: Albert Eelman

**CHAPTER MEETINGS**

December 7, 2013  
February 8, 2014  
April 12, 2014

**OCTOBER MEETING PRESENTER**



**“When the Railroads Came to Concord”**

Presenter Albert Eelman focuses on the Octora-ro Branch. Albert’s presentation will end with a video of a PRR fan trip originating from Philadelphia's 30th Street Station, onto Perryville

and then the Port Road all the way to Highspire.

The Susquehanna River is featured as well as various landmarks along the way. The fan trip video is a production of the Concord Township Historic Society.

**PHILADELPHIA CHAPTER STORE**




**PRRT&HS Custom Polo and T-Shirts**

You can obtain an order form online or by contacting Steve Staffieri by email (interceptor92@verizon.net).



**E - NEWSLETTER**

**Philadelphia Chapter News**

Subscribe at:   
<http://eepurl.com/ofMs5>

**NEW CHAPTER MAILING ADDRESS**



**Philadelphia Chapter PRRT&HS  
PO Box 356  
Merion Station, PA 19066-9998**

The Philadelphia Chapter (PRRT&HS) periodically publishes this newsletter. Contributions are encouraged and may be submitted for consideration, no later than (4) weeks prior to next scheduled meeting, by email to: [phillyprnews@yahoo.com](mailto:phillyprnews@yahoo.com) Editor: Russell Polo

Merion Station, PA 19066-9998  
P.O. Box 356  
TECHNICAL & HISTORICAL SOCIETY  
PENNSYLVANIA RAILROAD  
THE PHILADELPHIA CHAPTER

