



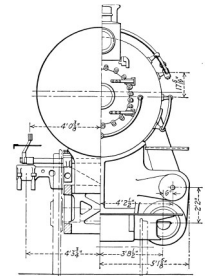
**FROM THE HEAD END - Steve Staffieri, President**

Well, as the summer “roast” slowly draws to a close, we look forward to our meetings and hopefully cooler weather.

This next meeting will be a little different. We have invited the Philadelphia Chapter of the National Model Railroad Association (NMRA) to be our “guests” and join us for the September meeting. This chapter will also be hosting our “Modelers Meeting” at 11 am. We are expecting a larger than normal turnout for this meeting, but don’t worry!! WE will have hoagies for everyone!! I realize that some of you are already members of both groups, but let’s make sure we make those new to our society feel welcome.

At the end of June a group of members helped move all our past publications to their new home in Bensalem PA. This new room is three times the size of the “storage center” and has windows for more visibility. Also it is a little more climate controlled to preserve the publications better.

Mark Cole will be handling the internet sales and the store at the meetings. I will be handling the “bulk” sales for the RR Museum and others. A Special thanks to all those who helped with this move especially during the heat that day! See you on the 15<sup>th</sup>!! - Steve Staffieri (*interceptor92@verizon.net*)



**PRR FRANKLIN INN**

The PRR “Franklin Inn” #8258, a twenty-one roomette sleeper which was built by the Budd Company (class PS21B) in 1949, was regularly assigned to the “Pittsburgher” running between New York City and Pittsburg. In 1963 the “Franklin Inn” livery no longer included the name as the car was renumbered to #1537 and was converted to passenger coach service running the North East Corridor between New York City and Washington D.C. In 1976 the “Franklin Inn” was sold and renamed “Pleasant Ridge” (Southeast Michigan Transportation Authority #102) seeing service between Detroit and Pontiac. In 1983 the car began service as a Maryland Transit Administration (MTA) commuter car, later joining the MARC Heritage Fleet where its former PRR name was restored. Retirement from revenue service occurred in 2001.

The MTA passed ownership to the National Railway Historical Society (NRHS)’s Washington D.C. chapter in 2008. The NRHS now operates the restored PRR “Franklin Inn” as a charter on multiple railroads, including Amtrak.

The 2012 (NRHS) convention was held on June 18-24 in Cedar Rapids, Iowa. PRRT&HS member Sheila Dorr had the privilege to ride the restored PRR passenger car “Franklin Inn” #8258. “Although the seats cannot be adjusted or turned, the restoration is truly first class”.  
*Contributed by Philadelphia Chapter PRRT&HS member -Sheila Dorr-*

**Narberth Ad Hoc Bridge Committee - Public Meeting - Thursday September 27, 2012 at 7:30 P.M  
Municipal Building, 100 Conway Avenue, Narberth, Pennsylvania**

Narberth Avenue Bridge, which crosses over the Amtrak Keystone Line, is in much need of repair or replacement. As of about three years ago Penn D.O.T. did a bridge inspection and closed the bridge due to a crack in the structure. After repairs were made, 3 months time, the bridge was reopened. “The Narberth Ad Hoc Bridge Committee” will be holding a public meeting in the Narberth Borough Hall, Narberth, PA on Thursday September 27, 2012 at 7:30 P.M. to present design drawings for the reconstruction of the North Narberth Avenue Bridge.”

*Contributed by Philadelphia Chapter PRRT&HS member -Wayne Bode-*

**ALTO TOWER RETIRED**

On June 16, 2012, Norfolk Southern (NS) retired the last PRR switch tower “Alto.”

Construction was completed on September 28, 1915 and was originally designated “JK.” It was not until February 19, 1942, that the tower was officially renamed “Alto.” After 97 years of service, Alto’s charge of protecting five (5) miles of mainline with forty-two (42) switches was transferred to NS’s Pittsburgh dispatch office.

*Contributed by Philadelphia Chapter PRRT&HS member -Sheila Dorr-*



**E - NEWSLETTER**

**Philadelphia Chapter News**

**Subscribe at:**

**<http://eepurl.com/ofMs5>**



## CHAPTER MEETING SEPTEMBER 15, 2012

**Drexel Hill Methodist Church**  
600 Burmont Road  
Drexel Hill, PA

- **10:30 AM: Doors Open**
- **11:00 AM: Modelers Meeting**  
NMRA - Philadelphia Division  
Special modelers presentation.
- **11:30 AM: Dining Car**
- **1:00 PM: Business /Meeting**  
Chapter Member Russ Yeakel  
presents photos taken along  
ex-PRR lines while a locomotive  
engineer for Conrail/NS.

## CHAPTER MEETING DATES

October 27, 2012  
December 8, 2012  
February 9, 2013  
April 13, 2013

## BELLEFONTE FALL FOLIAGE TRIPS

October 20 & 21, 2012, fall foliage excursions in the Penn Valley Railroads restored, vintage passenger coaches. Trips out of Bellefonte passenger station, located in Talleyrand Park, travel on former PRR track. Four (4) scheduled trips, each with different destinations (Pleasant Gap, Lemont, Sayers Dam & Tyrone). <http://www.bellefontetrain.org>

## PHILLY CHAPTER - PENNSY DAYS

The Philly Chapter held its "Pennsy Days" chapter meeting at the Railroad Museum of Pennsylvania (RRMP) on June 9, 2012. Attendees were invited to the back shop to review restoration progress of PRR #460.

The National Railway Historical Society (NRHS) - Lancaster Chapter opened their restored 1882 PRR Freight Station, Conrail N7E Caboose (restoration in progress) and the historic Christiana PRR Passenger Station (right). Thank you RRMP and NRHS - Lancaster!



*Photo and story Contributed by Philadelphia Chapter PRRT&HS member -Russ Polo-*



### The Philadelphia Chapter Membership Report

Renewals (as of August 1, 2012) = 548 (107% renewal rate over same period 2011)

Non Profit Distributions and Organizations = 12, New Members = 4

Total Membership = 564

New members: Charles Wahl, Charles Fox, David Pearson III, Charles Murphy III. Total new members for the year is 6. Walter Johnson and William Grosse from prior periods. All members will be getting new membership cards this fall with 2013 renewals.

The Philadelphia Chapter (PRRT&HS) periodically publishes this newsletter. Contributions are encouraged and may be submitted for consideration, by no later than (4) weeks prior to next scheduled meeting, by email to: [phillyprnews@yahoo.com](mailto:phillyprnews@yahoo.com) Editor: Russell Polo

Wayne, PA 19087-0663  
P.O. Box 663  
TECHNICAL & HISTORICAL SOCIETY  
PENNNSLVANIA RAILROAD  
THE PHILADELPHIA CHAPTER

